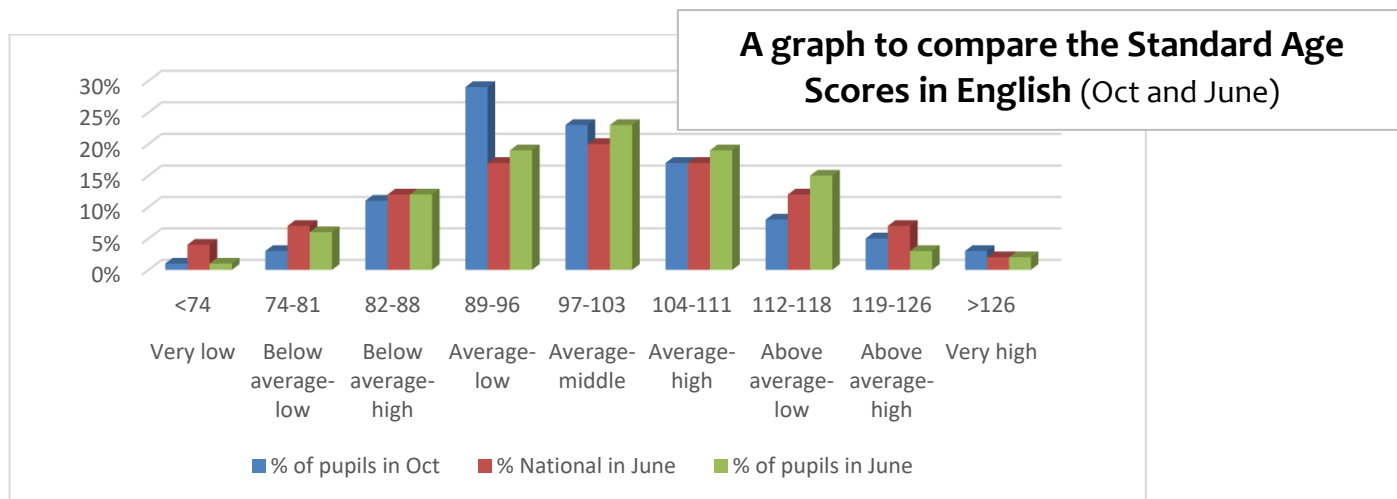


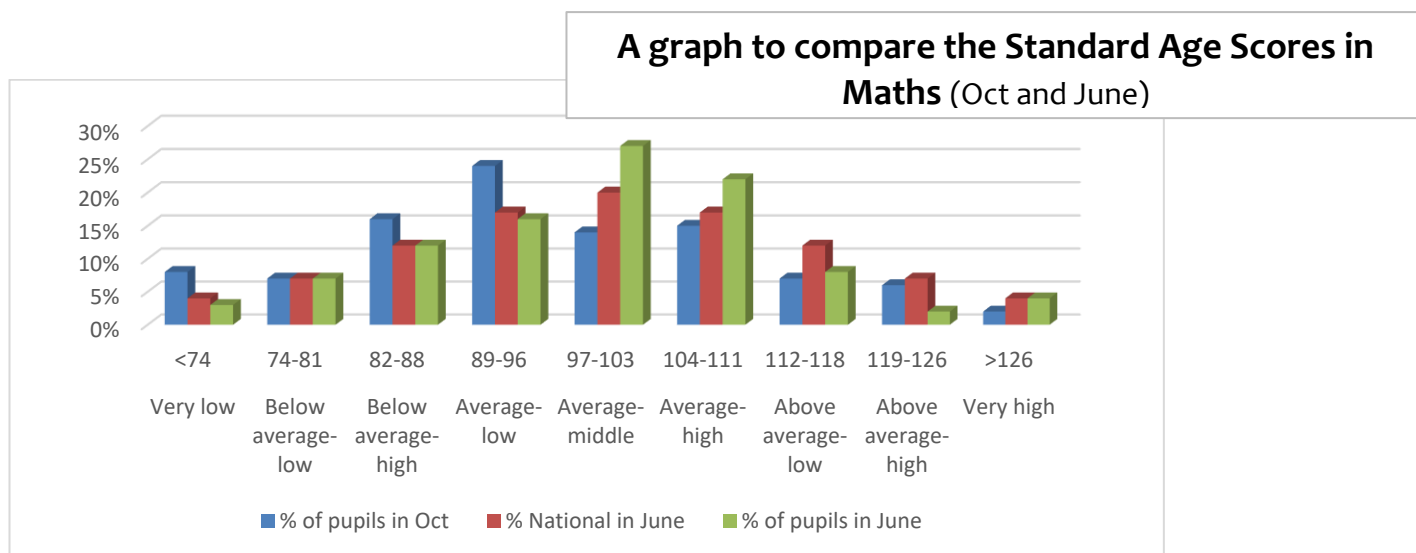
The school uses GL Assessments to measure its performance against national expectations. All GL data has been taken from the end of year GL assessments sat by each year group. Outcomes are noted as standard age scores unless otherwise noted, the national average of which is 100.

## Year 5 2015-16

### GL data- Baseline and end of year data



- In English, 51% of pupils have a standard age score of 100 (national average) or higher in June. This is an increase of 3% from the October GL Assessments.



- In Maths, 49% of pupils have a standard age score of 100 (national average) or higher in June. This is an increase of 11% from October.
- In October the mean Maths standard age score for this cohort was 95.9 compared to the national average of 100. This was classed as significantly below the National average. This rose to a mean standard age score of 99 in June. This is now not classed as significantly different to the national average.

## Progress

Based on baseline GL to the end of Year 5 GL results, 65% of pupils made expected or higher than expected progress in English.

In Maths this was 80% with 27% making greater than expected progress over the course of Year 5.

## Year 6 2015-16

### SATs (Standard Attainment Tests) Results/School performance Tables

Department for Education school data: <https://www.compare-school-performance.service.gov.uk/school/139185>

All children aged 7 to 11 are tested in the core subjects of English and Maths at the end of Key stages 1 and 2. In this school, Year 6 children are tested as they come to the end of Key Stage 2. The Department for Education considers a scaled score of 100 to be the attainment expected for their age. As such, it is the benchmark for schools and children's performance.

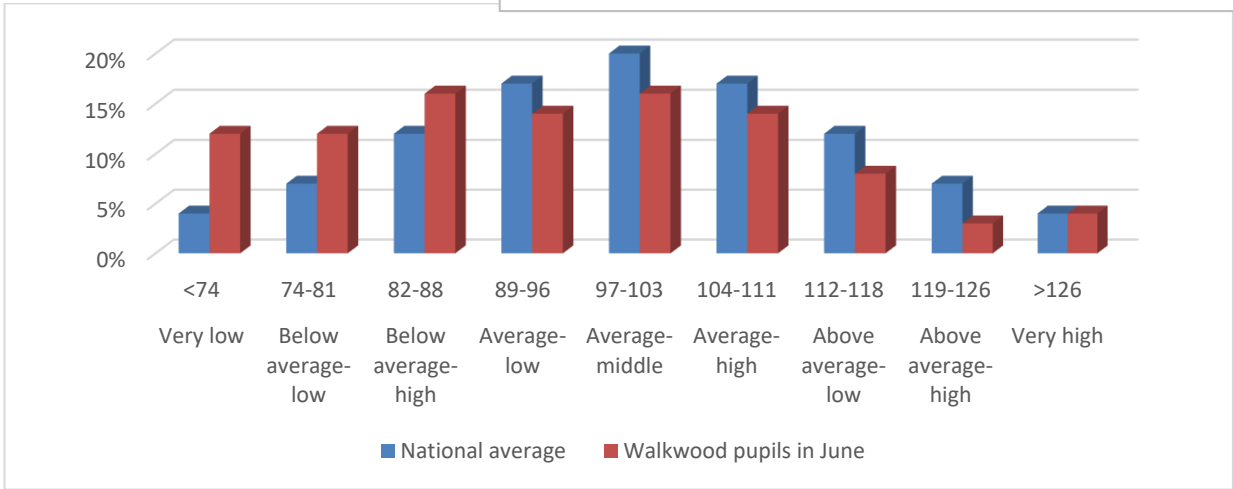
**SATs results** – these are given as average scaled scores.

Average scaled scores	Walkwood	Worcs	National
Maths	99.2	101.9	103
Reading	100.4	102.2	103
SPAG	101.2	102.9	104

% of pupils reaching national expectation	Walkwood	Worcs	National
Maths	53%	65%	70%
Reading	60%	65%	66%
SPaG	61%	67%	72%
Writing (Teacher Assessed)	66%	71%	74%
Combined	42%	49%	53%

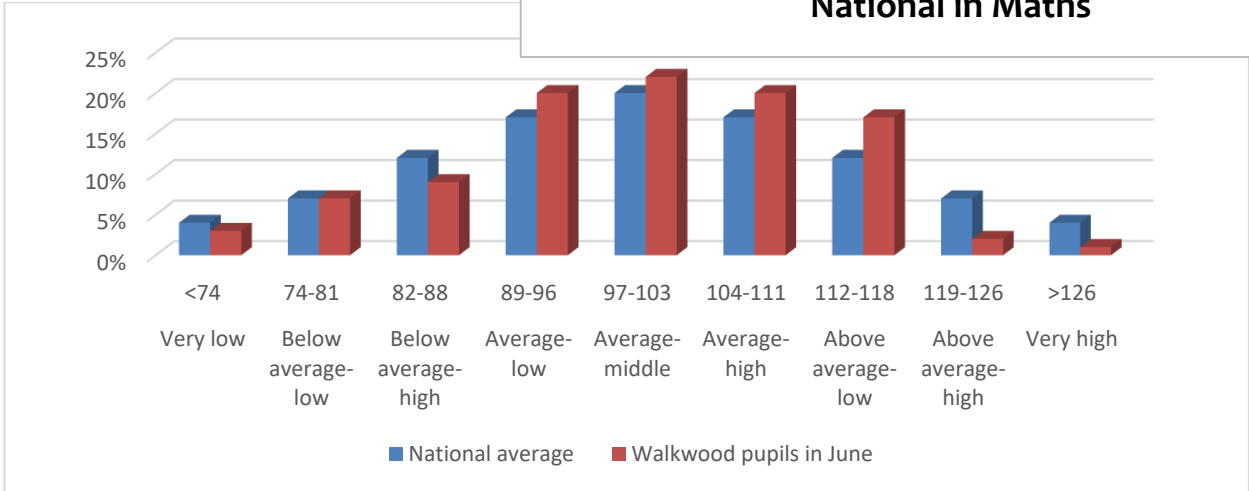


**A graph to compare the Standard Age Scores to National in English**



- In English, at the end of Year 7, 36% of pupils have a standard age score of 100 (national average) or higher.
- The mean English standard age score for this cohort is 94.4 compared to the national average of 100.

**A graph to compare the Standard Age Scores to National in Maths**

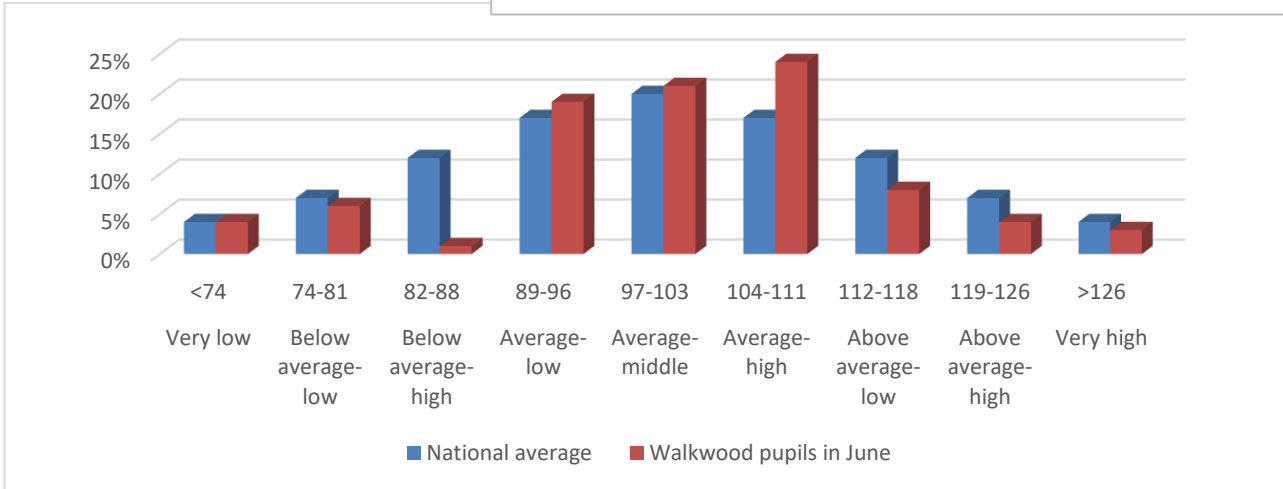


- In Maths, at the end of Year 7, 51% of pupils have a standard age score of 100 (national average) or higher.
- The mean Maths standard age score for this cohort is 99.5 compared to the national average of 100.

# Year 8 2015-16

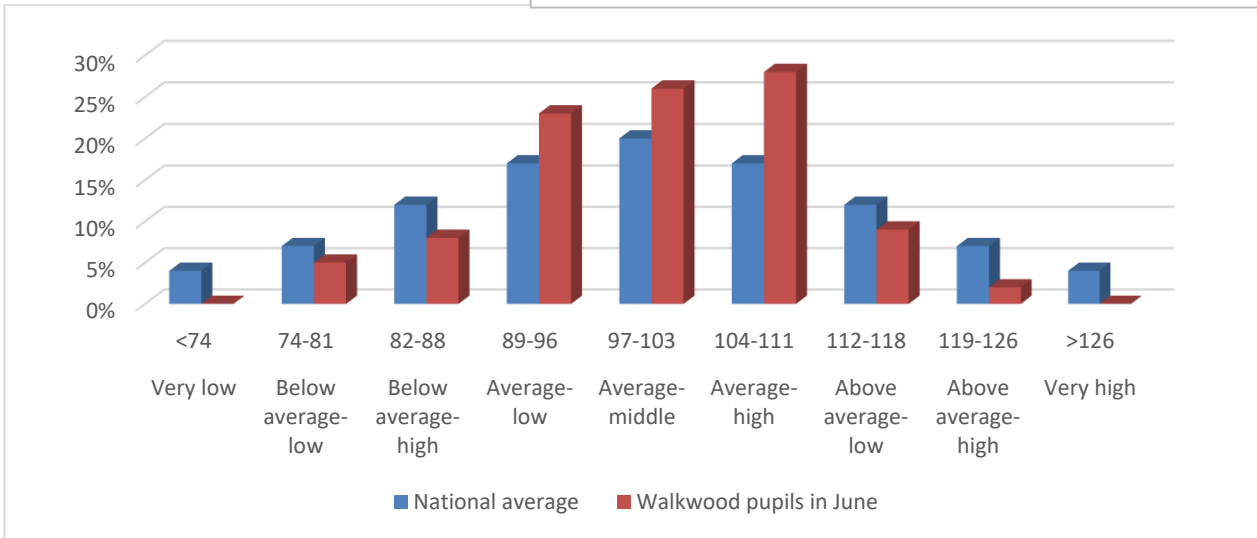
## End of year GL data

**A graph to compare the Standard Age Scores to National in English**



- In English, at the end of Year 8, 52% of pupils have a standard age score of 100 (national average) or higher.
- The mean English standard age score for this cohort is 99.3 compared to the National average of 100.

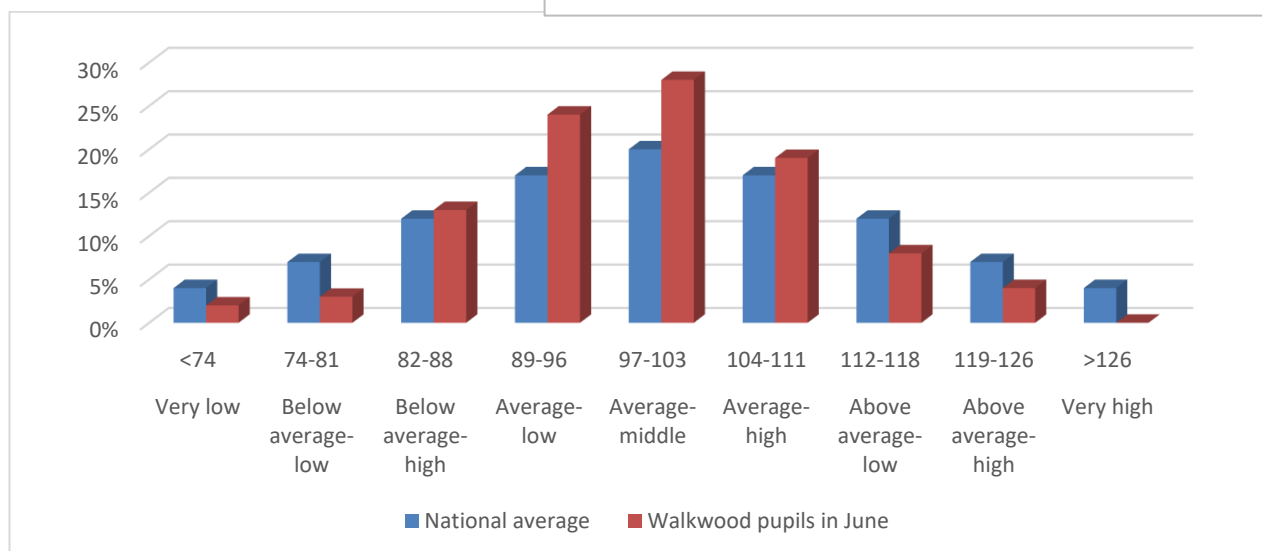
**A graph to compare the Standard Age Scores to National in Maths**



- In Maths, at the end of Year 8, 56% of pupils have a standard age score of 100 (National average) or higher.
- The mean Maths standard age score for this cohort is 99.5 compared to the National average of 100.



## A graph to compare the Standard Age Scores to National in Science



- In Science, at the end of Year 8, 47% of pupils have a standard age score of 100 (national average) or higher.
- The mean Science standard age score for this cohort is 98.4 compared to the National average of 100.

### Entry (Year 5) to exit data (Year 8)

Entry to exit progress has been shown using Year 5 baseline data and GL Assessments taken at the end of Year 8.

#### Reading:

89% of pupils made expected progress and 62% exceeded expected progress.  
 100% of pupil premium pupils made expected progress and 75% exceeded expected progress.

#### Writing:

94% of pupils made expected progress and 85% exceeded expected progress.  
 100% of pupil premium pupils exceeded expected progress.

#### Maths:

91% of pupils made expected progress and 65% exceeded expected progress.  
 86% of pupil premium pupils made expected progress and 57% exceeded expected progress.

